

# Q-LIGHT



Pathway bollard series. Fixtures consist of:

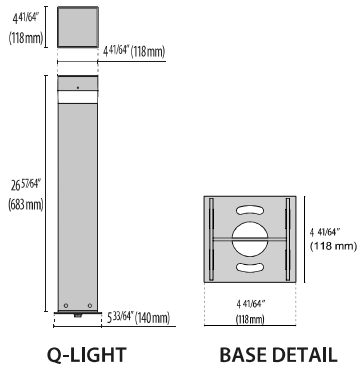
- Multi-step powder-coat painting process, optimized against UV rays and corrosion.
- Copper-free (<1%) aluminum extruded post.
- Copper-free (<1%) precision die-cast aluminum housing and top cap.
- Clear UV-stabilized, high-impact resistant diffuser.
- Custom molded, anti-aging gasket(s).
- Stainless steel external hardware.
- Custom MCPCB utilized to maximize heat dissipation and promote long LED life.
- Internal specular reflector coated with 5-layers of PVD 99.98% pure aluminum providing >95% reflection.
- Type V light distribution.
- Input voltage: 120-277 V (50 / 60 Hz), integral driver.
- Input voltage: 120-277 V (50 / 60 Hz), integral 0-10 V dimming driver.
- Pre-wired factory sealed cable for external electrical connection included.

- Steel ground base plate included for bollards.
- The luminaire may be configured with numerous options and multiple standard finishes. Not all options are available in all configurations. Consult factory for more information about specification sheet details to build your light.
- Product meets Buy American Act (BAA) requirements within ARRA.
- 5-year warranty.



### FINISHES

- AN-96 / Iron gray / Textured
- GR-94 / Aluminum metallic / Textured
- BK-81 / Black / Textured
- WH-87 / White / Textured
- RB-10 / Iron rust / Textured



LUMEN OUTPUT						
	27K	30K	35K	40K	50K	65K
14W	965	1032	1099	1166	1233	1300
21W	1389	1480	1571	1662	1753	1844

Scan here  
for installation  
instructions



# Order Guide – Q-Light

Order code example: QL-26-21W -4K -AM-UNV-NA



QL-							
SERIES	Bollard Height	Wattage	CCT	Finish	Voltage	Controls	Accessories
QL Q-Light Bollard	26 26 inch*	14W 14 watt*	27K 2700 Kelvin	AM Aluminum Metallic*	UNV 120-277V*	0-10V 0-10V Dim*	GFCI-1 1X 20-Amp Outlet
	38 38 inch	21W 21 watt* (Max)	3K 3000 Kelvin*	IG Iron Gray*	120V 120V only	ELV ELV Dim	GFCI-2 2X 20-Amp Outlet
	42 42 inch	XX Specify wattage must be within range	35K 3500 Kelvin	IR Iron Rust			USB-1 1X 4-Port USB Outlet
	XX Specify Height		4K 4000 Kelvin*	BK Black			USB-2 2X 4-Port USB Outlet
			5K 5000 Kelvin	WH White			HSS House Side Shield
			65K 6500 Kelvin	CC Custom Color			PHC Photocell
			AMB Static Amber				*See Below for more details*
			RED Static Red				
			BLU Static Blue				
			GRN Static Green				
			RGBW See Below for Details				

\*STANDARD OPTION, SHORTER LEAD TIME, NO MOQ\*

TEMPLATE AND ANCHOR BOLTS INCLUDED WITH FIXTURE

80 CRI STANDARD - OTHER OPTIONS AVAILABLE

PERFORMANCE IN LIGHTING reserves the right to make all necessary changes without prior notice

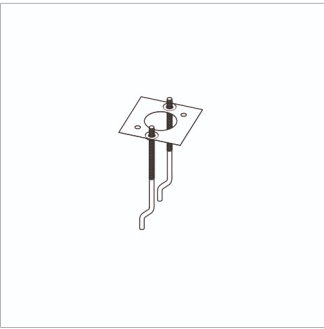
PERFORMANCE IN LIGHTING USA, Inc.  
2621 Keys Pointe Conyers GA 30013 - United States  
Tel: 770 822 2115

info.usa@pil.lighting  
www.performanceinlighting.com/us

REVISION 05  
02/24

REQUIRED FOR INSTALLATION Included with Fixture

DESCRIPTION	FINISH	PART NUMBER
<b>Q-LIGHT</b>		
Concrete mounting adaptor with stainless steel plate and galvanised steel rods		<b>310398</b>



310398

OPTIONAL CONFIGURATION AND ACCESSORIES

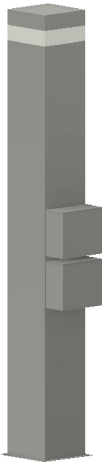
DESCRIPTION	FINISH	PART NUMBER
<b>Q-LIGHT</b>		
SINGLE GANG SURFACE JBOX WITH 20 AMP GFCI OUTLET - (TWO OUTLETS TOTAL)		<b>GFCI-1</b>
DOUBLE GANG SURFACE JBOX WITH TWO 20 AMP GFCI OUTLETS (FOUR OUTLETS TOTAL)		<b>GFCI-2</b>
SINGLE GANG SURFACE JBOX WITH USB CHARGING PORTS (FOUR USB PORTS TOTAL)		<b>USB-1</b>
DOUBLE GANG SURFACE JBOX WITH USB CHARGING (EIGHT USB PORTS TOTAL)		<b>USB-2</b>
HOUSE SIDE SHIELD		<b>HSS</b>
PHOTOCELL		<b>PHC</b>

FIXTURE CAN BE SPECIFIED WITH A COMBINATION OF OPTIONS INCLUDING 2X GFCI-2, OR 2X USB-2

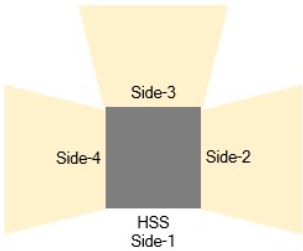
WHEN SPECIFYING USB, PLEASE PROVIDE THE USB TYPE NEEDED, USB-A OR USB-C



Fixture shown with single gang surface mounted jbox, suitable for GFCI-1 & USB-1



Fixture shown with two double gang surface mounted jboxes, suitable for GFCI-2 & USB-2



Light output showing House Side Shield

## RGBW ACCESSORIES

### Power Supply



17433  
Kit driver 48V



17096  
Kit driver 48V WP

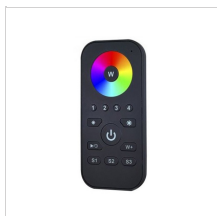
### RF Controls



3104173  
RGBW RF controller 4 channel  
(0.35A each CH)



31041730  
RGBW RF controller WP 4 channel  
(0.35A each CH)



310429  
RGBW hand held remote

### DMX Controls



178973  
RGBW DMX enabler/decoder 4  
channel (0.35A each CH)



1789730  
RGBW DMX enabler/decoder WP 4  
channel (0.35A each CH)